

// Mamut Business Software  
**Installation Guide**

# Introduction

This guide has been created In order to simplify the installation and first time startup of Mamut Business Software.

The structure of the guide is similar to the way the installation and first time startup should be performed, thereby providing you with step-by-step instructions to get started with Mamut Business Software.

If you have any questions regarding the installation and first time startup of the program, then do not hesitate to contact us. More information can be found at the end of this guide.

# Content

<b>Before Installation .....</b>	<b>2</b>
About the Program.....	2
About Installation .....	3
About Multi-user Installations.....	4
<b>During Installation .....</b>	<b>6</b>
Installation prerequisites.....	6
How to Install: Single-User .....	6
How to Install: Server .....	10
How to Install: Client/Workstation....	14
<b>After Installation.....</b>	<b>18</b>
First Time Startup Wizard.....	18
Sharing the Document Directory .....	21
Firewall on the Server.....	24
Evaluate, move and update Mamut Business Software .....	29
<b>Where to find more information .....</b>	<b>2</b>
<b>Mamut Support Centre .....</b>	<b>32</b>

*Version 17*

*MBS.BKL.IG.UK.170.1*

# Before Installation

## About the Program

>> We strongly recommend that you read this guide before commencing the installation of the program. By doing so, you will familiarise yourself with the system requirements and the terms used during the installation, and thereby prevent any errors that might occur during the process.

The elements below are part of Mamut Business Software. Most of these run in the background and will have little impact on your daily work with the program. However, it is important to be aware of these elements.

### SQL Server®

Mamut Business Software uses Microsoft® SQL Server® as a database. When installing the program it will check if you already have Microsoft SQL Server installed on the computer.

If it is already installed, you are able to use it. We recommend that you create a separate instance for Mamut Business Software. This can be done in the installation wizard.

### Database files

The database files contain all data that you enter in the different modules in the program, such as contact information, sales and purchase data along with accounting data. During the installation, a predefined file path will be suggested. This file path can be customised by defining a new file path in the **Advanced settings** in the installation wizard. The database files must be installed on a local disk on the server; external devices or mapped drives cannot be used. We recommend that you use the predefined file path.

### Document directory

The document directory is used by the system to save documents, pictures, reports and other files that are not part of the database. Each system database will be allocated a unique area. The document directory is created in the first time startup wizard, and can be customised by clicking **Browse** in the wizard. It must be shared in the network so that all users have access to it.

### Licence

Your licence determines how many computers you can install the program on. If you have received your licence number, you can register this in the wizard for first time startup. Otherwise select to install the evaluation version in this wizard, and enter the licence number in the program at a later point by going to **Help - About - Register Licence number**.

### About Installation

Before you commence the installation of Mamut Business Software, it is important that your system meets the system requirements, and that you know which type of installation you will perform. If you already know this information, the installation wizard should take you about 5 to 10 minutes. The total installation time can take up to 30 minutes (possibly longer on old/slow systems), depending on your computer setup.

### System requirements

The program has been designed to work on updated Windows® versions and updated hardware.

Complete and updated system recommendations can be found here:

[www.mamut.co.uk/system](http://www.mamut.co.uk/system).

### Installation Types

Before you proceed with the installation, you should decide which type of installation to install. The different types are installed from the same download page. You can select the type of installation within the wizard:

#### Single-user

This option is used when you have a licence that allows for installation on one computer. The program files must be installed on the computer that you plan to run the program on. However, additional persons are able to share the machine and register as users of the program.

#### Multi-user

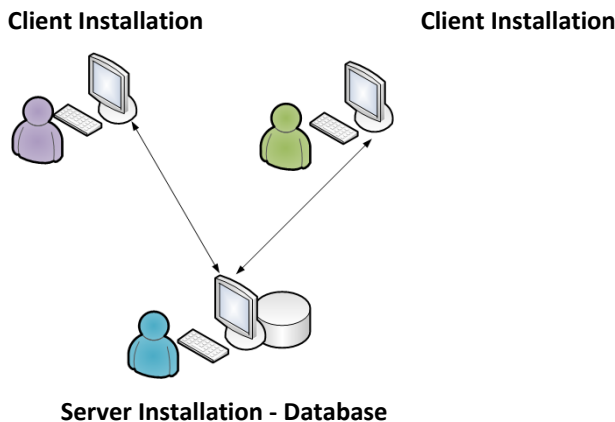
If you have purchased a multi-user licence, you are entitled to use the program on different computers. In this case, the program files are installed on the different work stations, but the database is stored on a server to which all work stations connect.

### About Multi-user Installations

If you have purchased a multi-user licence, you firstly need to choose which computer will be used as the server and you must install the program on the server computer first. It is important to ensure that all users have the appropriate user access to the data folder on this computer. The computer you choose can be a computer only used as the server (dedicated server), or it can be one of the user's computers. We advise that you use a dedicated server when you will install on three or more work stations.

#### The database on one of the users' computers

All the computers in the network share information from the database, which is installed on one of the computers. Other users can only access the system if the server computer is running, which means that the user of the server computer, can never switch off the computer while others are working.

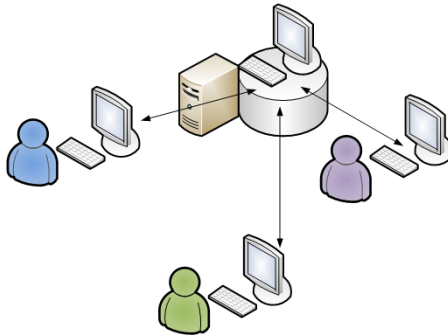


However, it may still be sensible to place the database on the computer of the person who uses the program the most. This user will then have the quickest access to the files in the database. It is common to use the network's newest or fastest computer as the server, in order to ensure speed and reliability.

#### The database on one server

In a 'client-server' network, one of the computers is used as a dedicated server from which all files are shared. An example of an operating system for a 'client server' network is the Windows 2008 Server. In a 'client server' network you should place the database in a place on the server where all the users of the program have access to it. The Mamut Business Software program files still need to be installed on every single computer.

### **Dedicated Server with Server Installation and Database**



### **Client Installations**

After the installation on the server, you can proceed to install the program files on the computers that the program will be used from. When installing on the server, you can choose to copy the installation files for client installation and save them to a shared location on your server.

### **Copy installation files for simpler client installations**

When you are installing onto the server computer you are able to choose to copy the installation files for client installation, within the installation wizard. These installation files can later be used by other users who want to install the program. This will thereby simplify the installation process for the users, and as the system administrator you are able to predefine the values. Other users will also be connected directly to the correct server and instance. If a user logs on to the server with a client installation that is older than the copied installation files, a message containing a file path to the new installation files will be displayed.


# During Installation

## Installation prerequisites

You can now start the installation of Mamut Business Software by downloading the program from our website.

Ensure that you have met all prerequisites before starting the installation.

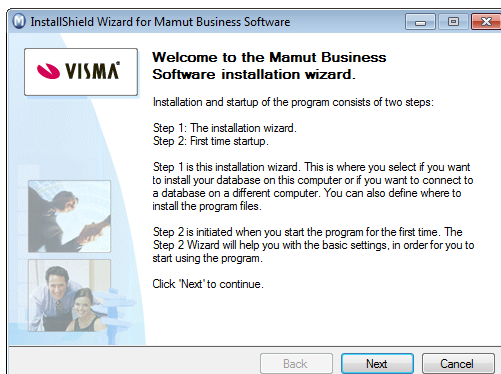
- Ensure that the system requirements are met
- Complete all Windows Updates
- Log in as an administrator in Windows
- Close all programs

 In some windows you will find this **Help** button. Click on the button for more information regarding the corresponding step in the wizard.

Below you will find the instructions for the different installation types.

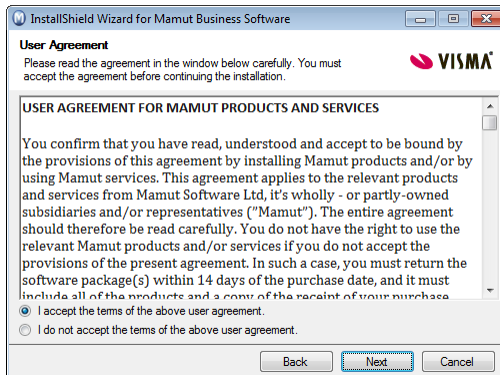
## How to Install: Single-User

### 1. Welcome



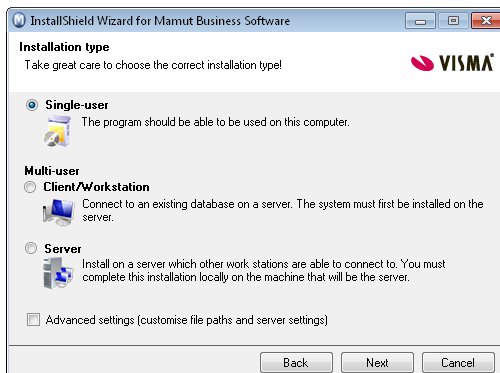
The wizard will guide you through the installation.

### 2. User Agreement



Read the user agreement and select **I accept the terms of the above user agreement.**

### 3a. Installation Type

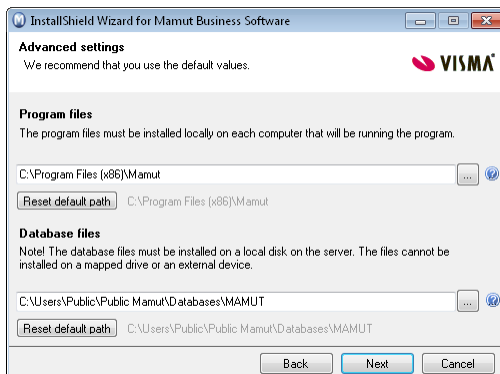


Select the installation type, in this example **Single-user**.

**Advanced settings:** Check this box if you wish to customise the location the program files and database files will be installed to.

### 3b. Advanced Settings

*This window will only be shown if the **Advanced settings** have been selected in step 3a.*



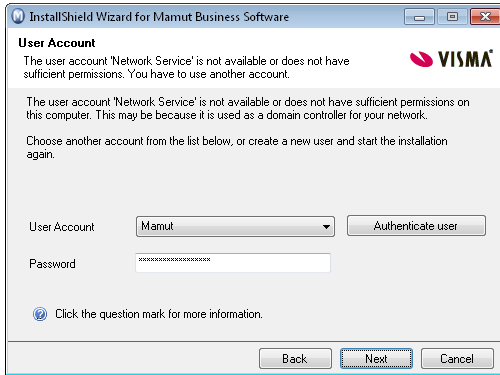
Click the button next to the **Program** and/or **Database files** fields to navigate to the location you wish to install the files. Click **OK**.

Click **Reset default path** if you want to revert back to the default file paths.



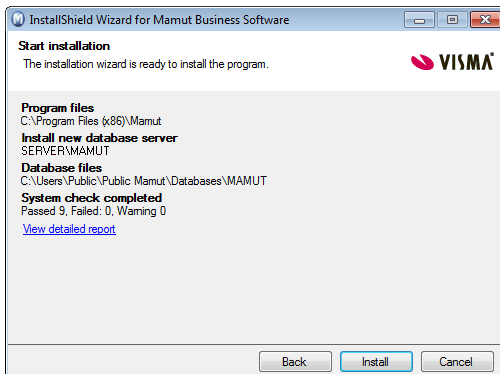
### 4. User Account

*This window will only be shown if you are installing on a computer which is the domain controller for your network, or have changed the permissions of the user account "Network Service".*



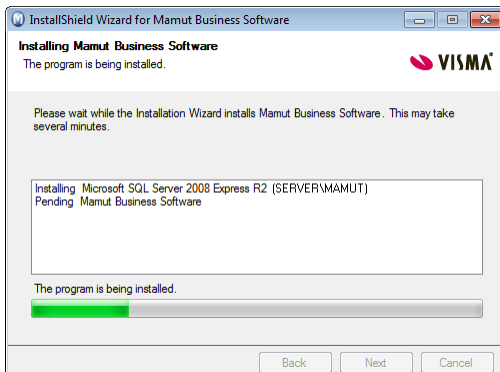
Select the user account which has sufficient permissions to perform the installation, or click **Cancel** if you wish to leave the installation wizard and create a new user account before starting the installation again.

### 5. Start Installation



In the summary, click **Install** to start the installation or click **Back** if you wish to change any of the settings.

### 6. Installation Progress



Mamut Business Software will now be installed. This process may take some time and it is important that you do not cancel this process.

### 7. Installation Complete

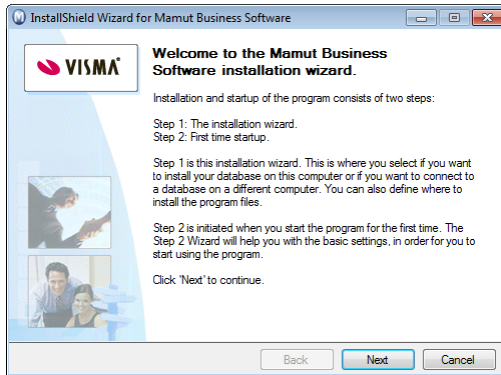


Click **Finish** to complete the installation.

We recommend that you restart your computer before you continue.

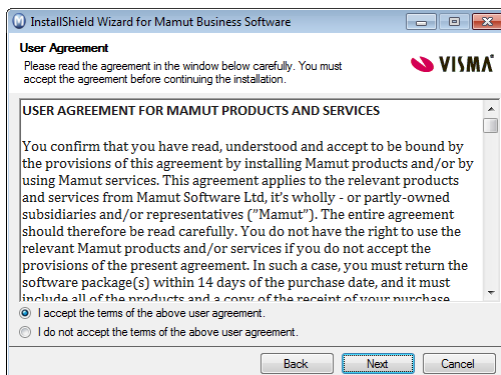
# How to Install: Server

## 1. Welcome



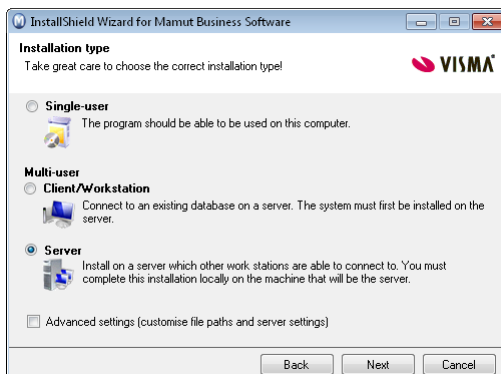
The wizard will guide you through the installation.

## 2. User Agreement



Read the user agreement and select **I accept the terms of the above user agreement.**

## 3a. Installation Type

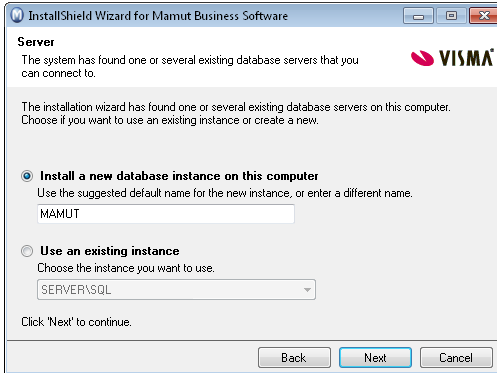


Select the installation type, in this example **Server**.

**Advanced settings:** Check this box if you wish to customise the location the program files and database files will be installed to.

### 3b. Advanced Settings - Database Server Found

*This window will only be shown if one or more SQL Server® databases are found.*

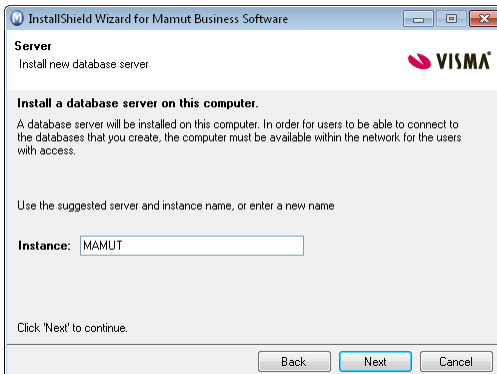


The system suggests installing a new database instance with the name <MAMUT>. We recommend that you select this.

Alternatively, you can use an existing instance.

### 3c. Advanced Settings - Installing a new Database Server

*This window will only be shown if no SQL Server® databases are found.*

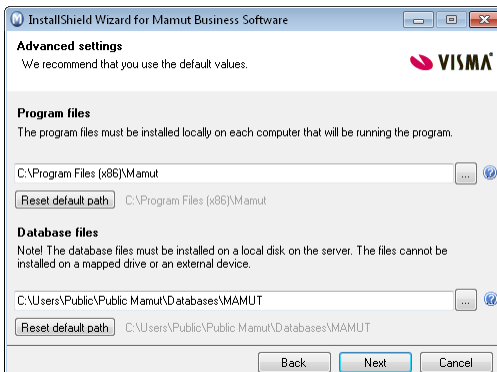


A database will now be created. The system suggests the name <MAMUT>. We recommend that you choose this.

Alternatively, you can enter another name in the window **Instance**. You cannot use spaces or characters in the database name.

### 3d. Advanced Settings

*This window will only be shown if the **Advanced settings** have been selected in step 3a.*

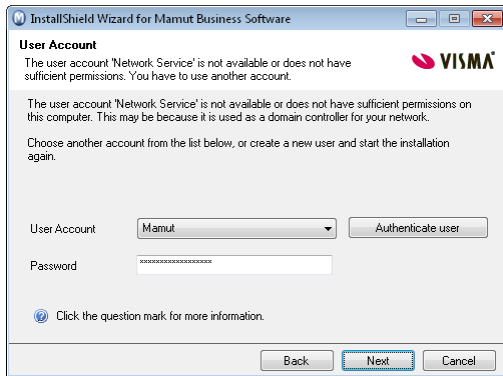


Click the button next to the **Program** and/or **Database files** fields to navigate to the location you wish to install the files. Click **OK**.

Click **Reset default path** if you want to revert back to the default file paths.

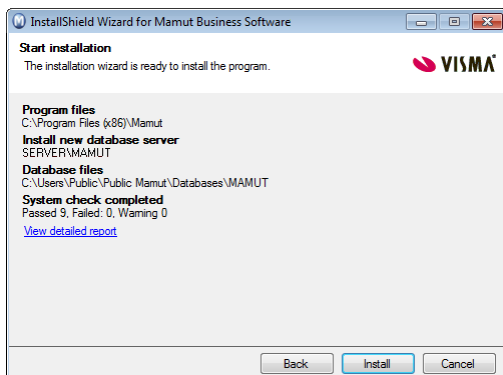
### 4. User Account

*This window will only be shown if you are installing on a computer which is the domain controller for your network, or have changed the permissions of the user account "Network Service".*



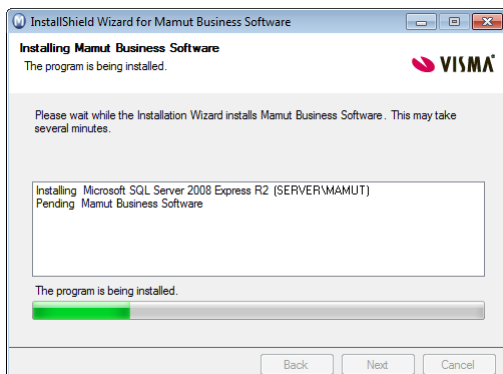
Select the user account which has sufficient permissions to perform the installation, or click **Cancel** if you wish to leave the installation wizard and create a new user account before starting the installation again.

### 5. Start Installation



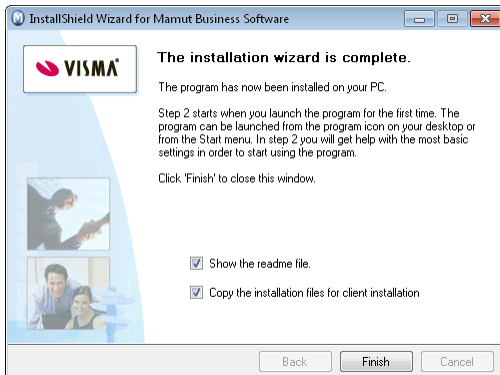
In the summary, click **Install** to start the installation or click **Back** if you wish to change any of the settings.

### 6. Installation Progress



Mamut Business Software will now be installed. This process may take some time and it is important that you do not cancel this process.

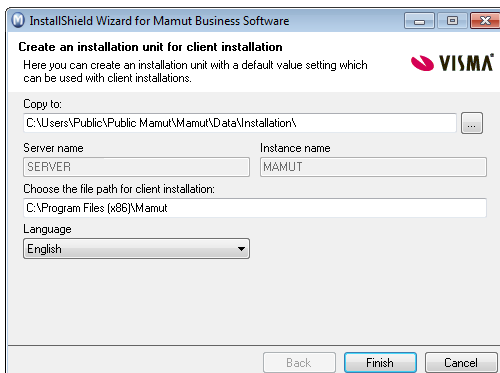
### 7. Installation Complete



Select **Copy the installation files for client installation** if you wish to create installation files. These installation files can be used to simplify the installation on the work stations. Read more about this in the section "About multi-user installations".

Click **Finish** to complete the installation.

### 8. Create an Installation Set

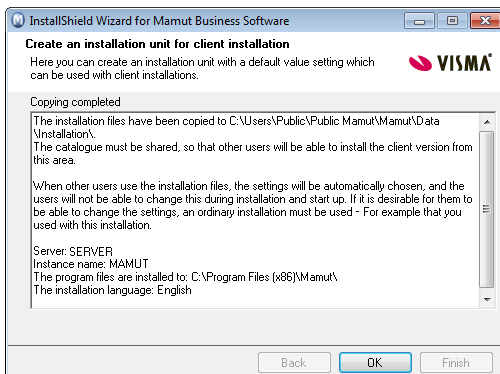


If you chose to create an installation set above, you can enter the settings here.

In the field **Choose file path for client installation** select which folder the users shall install the program files to. This path must exist on all work stations.

Click **Finish** to create the installation set.

### 9. Installation Set has been created



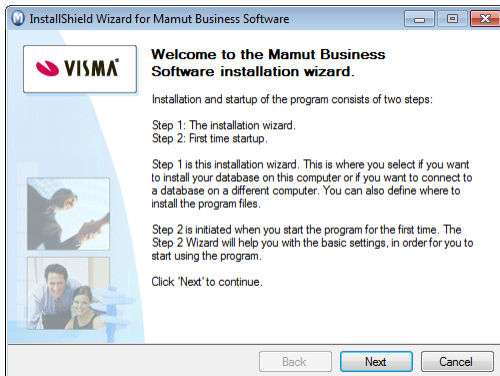
Click **OK** to continue.

We recommend that you restart your computer before you continue.

# How to Install: Client/Workstation

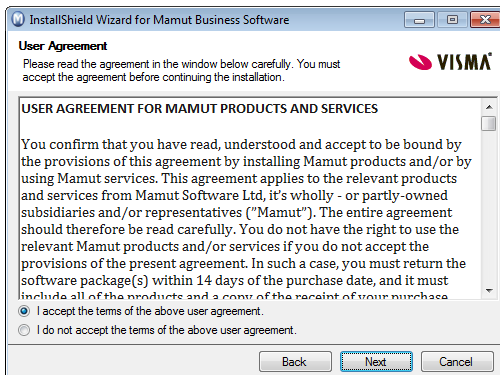
**>> Important!** Before you install the program on the Client/Workstation, you firstly need to perform the first time startup on the server and share the document directory. The instructions for this can be found below, in the chapter "After installation".

## 1. Welcome



The wizard will guide you through the installation.

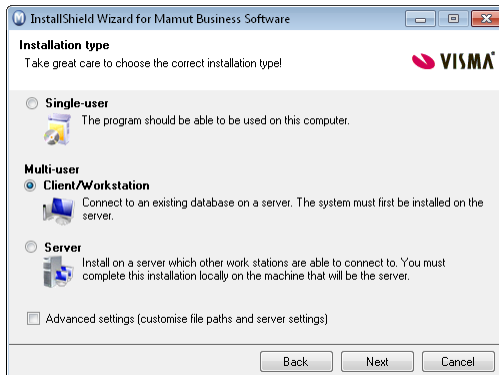
## 2. User Agreement



Read the user agreement and select **I accept the terms of the above user agreement.**

### 3a. Installation Type

**Note!** If you install with a **client installation set**, you are not able to change the installation type or select the advanced settings.

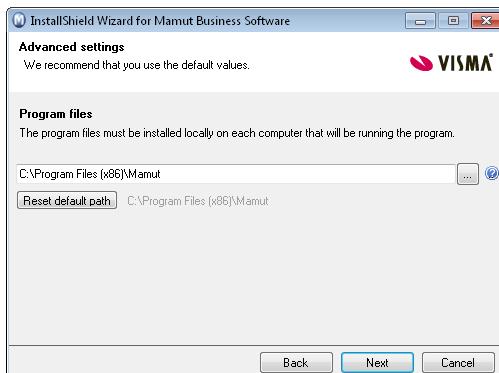


Select the installation type, in this example **Client/Workstation**.

**Advanced settings:** Check this box if you wish to customise the location the program files and database files will be installed to.

### 3b. Advanced Settings

This window will only be shown if the **Advanced settings** have been selected in step 3a.

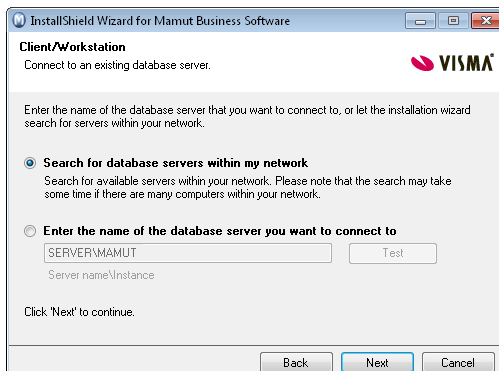


Click the button next to the **Program files** field to navigate to the location you wish to install the files. Click **OK**.

Click **Reset default path** if you want to revert back to the default file path.

### 4. Connect to the Database Server

**Note!** If you install with a **client installation set**, you are not able to change anything.



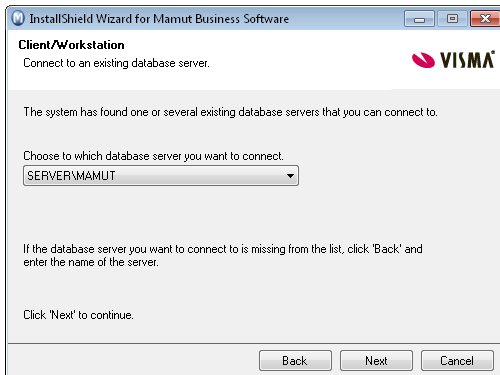
In this window you can choose which database server you wish to connect to.

Click **Next** to search for a database server in your network or enter Servername\Instance manually in the field below if you are familiar with the information.



### 5. Select Database Server

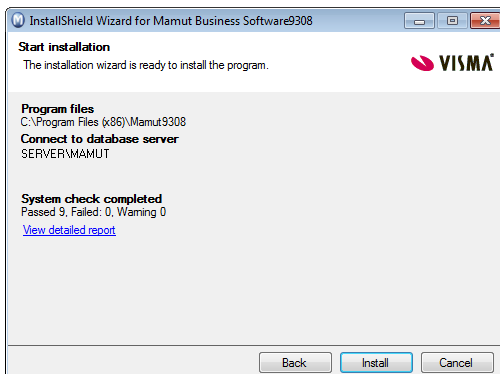
**Note!** If you install with a **client installation set**, you are not able to change anything.



Select the correct database server from the drop-down list.

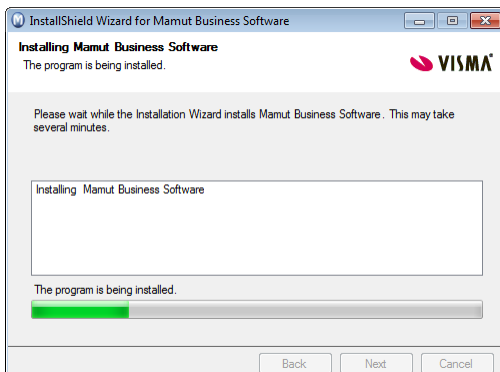
If the system does not find any database servers, this may be because you do not have access to the server computer in the network. Contact the system administrator in order to solve this before continuing.

### 6. Start Installation



In the summary, click **Install** to start the installation or click **Back** if you wish to change any of the settings.

### 7. Installation Progress



Mamut Business Software will now be installed. This process may take some time and it is important that you do not cancel this process.

### 8. Installation Complete



Click **Finish** to complete the installation.

We recommend that you restart your computer before you continue.

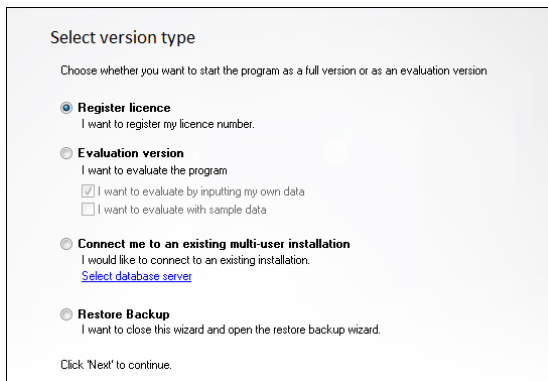
If you are installing with a Client installation set, you will be taken directly to the login window when you start the program.

# After Installation

## First Time Startup Wizard

Once the installation of Mamut Business Software has been completed, you can perform the first time startup by double clicking the Mamut icon on your desktop. A wizard will help you to create the system and company database, as well as your user profile.

### 1a. Select Version



The screenshot shows a window titled "Select version type". Below the title is the instruction: "Choose whether you want to start the program as a full version or as an evaluation version". There are four radio button options: "Register licence" (selected), "Evaluation version", "Connect me to an existing multi-user installation", and "Restore Backup". Each option has a brief description. Under "Evaluation version", there are two checkboxes: "I want to evaluate by inputting my own data" (checked) and "I want to evaluate with sample data" (unchecked). Under "Connect me to an existing multi-user installation", there is a link "Select database server". At the bottom, it says "Click 'Next' to continue."

Select the correct **version type**.

In this example we will choose **Register licence**. You can install the evaluation version if you have not received a licence yet. Read more about evaluating the program below.

### 1b. Connect to a multi-user Installation

*This window will only be shown if you selected **Connect me to an existing multi-user installation** in step 1a.*



The screenshot shows a window titled "Connect me to an existing multi-user installation". Below the title is the instruction: "Choose which installation you want to connect to. If you do not know which one to select, please contact your system administrator." Below this is a list box containing the text "The Office Store, Office Furniture Ltd".

A list of the existing databases will be shown.

Select the database you wish to connect to and click **Next**. You will be directly taken to the login window.

### 2. Document Directory

*In a server installation, the document directory must be located in a shared directory and the path must be a network path. Please read the extra instructions in the window if you are installing on a server.*

**Document Directory**

You have chosen to install the system for a user on a local computer. We recommend that you use the standard document directory recommended below.  
Click 'Next' to continue.

Document directory  
C:\Users\Public\Public Mamut\Mamut\Data\

Database:

Server

Instance

Click **Browse** if you wish to use another location. We recommend that you use the default path.

**Database: Server and Instance** are created automatically.

### 3. User Profile

**Create a user profile**

You will now create a user profile for the System Administrator. The System Administrator will have full access to all modules and functions in the program. Please make a note of the username and password.

Full name

Username

Password

Verify password

Click 'Next' to continue.

Create your **User profile**.

Please make a note of your username and password. You should not use special characters, blank spaces or periods in the username or password.

### 4. Register the Program

**Register the program**

Please enter your company details for our records. This will be registered with the supplier of the software.

Name/Company  Telephone

Address  Fax

Postcode  Language

Town/City  Type of business

Country  Subject Area

Country  Retailer

Contact Person  Mr

E-mail  As a user, you will receive user tips and special offers by e-mail

Company Reg. no.  ☐ I do not wish to receive this kind of information from Mamut.

Licence Number

Field is required

Click 'Next' to continue.

Register the program by adding all required information.

**Tip!** In the licence number, <0> is always a digit, not a letter.

### 5. Create a Company Database

Create a new company database with the help of a wizard.

You can get help from a wizard when setting up your company database. The wizard consists of 5 to 10 steps and includes the most common settings, which can be made for a company database.

The following stipulations apply to the wizard

- All the settings, excluding those for COUNTRY, can be changed after the company database has been created.
- Certain information can be changed up until they have been applied for the first time, e.g. the accounting year can be changed until you first use the accounting module.
- The wizard contains only a selection of all settings available in the system.
- Every step in the wizard has its own help button, pressing which will give you information on the current setting as well as other settings for the module.

☐ No, thank you. I do not want to use the wizard to set up my company database.

Click on 'Next' to start the wizard or to directly create your company database.

You can choose to create a new company database with the help of a wizard. This will guide you through the most important settings. Select **No, thank you...** if you do not want to launch the wizard.

### 6. Company Settings

Company Settings

Name \* John Smith

Invoice address 22 High Street

Country London

Postcode EC4A 1AZ Town/City London

Country \* United Kingdom

Currency \* GBP

Accounting year \* 2010 ☒ Select first month of accounting year Jan - 2010

Chart Of Accounts \* Nominal ledger [Details](#)


VAT VAT no. No. of VAT periods

VAT Registered 987654321 4

If you have chosen not to use the wizard, you must enter the company information before completing the startup.

### 7. Login

Login



Please enter your username and password

Username JohnK

Password xxxxxxxxxxxx

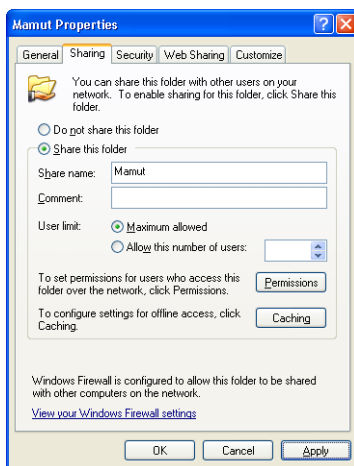
Log in with the username and password that you created earlier.

# Sharing the Document Directory

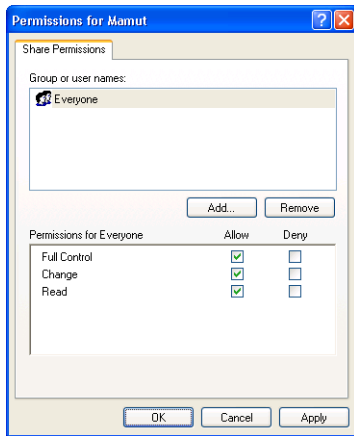
For multi-user installations of Mamut Business Software, you first have to install the program on a machine and select which machine/server the database should be placed on. Next, you need to share the document directory and give other machines full access to the database so that they can link to it and retrieve information from there. In most cases, the folder should be shared with the user account **All** or **Everyone**. However, it is also possible to grant read/write access to the separate user accounts.

## How to Share the Document Directory in Windows XP and Windows Server 2003

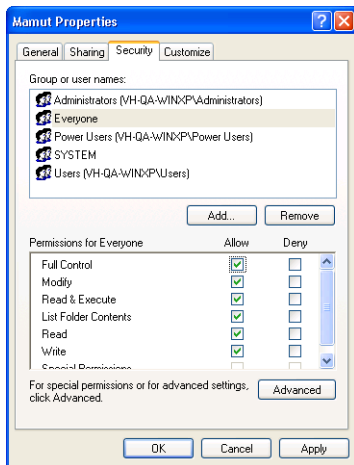
1. Open Windows Explorer and locate the Document directory.  
**Tip!** You can open the document directory in Windows Explorer by selecting **File - Database Utilities - Go to the Company database's document directory** from within Mamut Business Software. Please note that you will now open the document directory of the company database. We advise to share the entire document directory, which can be found higher up in the file structure. By default, the folder that should be shared is called <Mamut>.
2. Move up in the file structure, right-click the <Mamut> folder and select **Sharing and Security**.  
**Note!** If you have activated the option **Simple File Sharing**, then you need to deactivate this setting. To do so, open Windows Explorer and go to **Tools - Folder Options - View**. In the **Advanced Settings** section, click to clear the **Use simple file sharing** box.
3. On the **Sharing** tab, select **Share this folder**.




- Click **Permission** to name the users with access.  
The users that will use the program must have full access.



- Click **OK**.
- Open the tab **Security** and give the users full access there as well.



- Click **OK**.

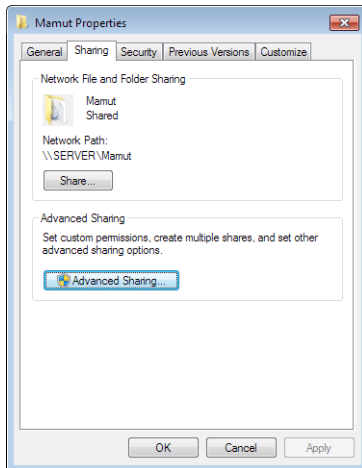
 Each computer will now have access to the server's database.

### How to Share the Document Directory in Windows Vista and newer or Windows Server 2008 and newer

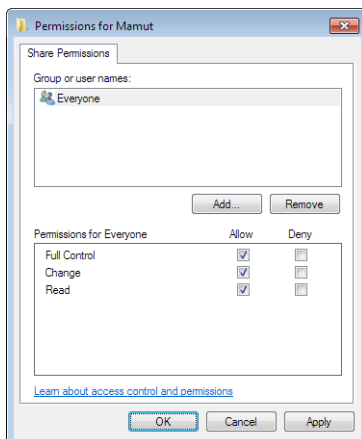
1. Open Window Explorer and locate the Document directory.

**Tip!** You can open the document directory in Windows Explorer by selecting **File - Database Utilities - Go to the Company database's document directory** from within Mamut Business Software. We advise to share the entire document directory, which can be found higher up in the file structure. By default, the folder <Mamut> should be shared.

2. Move up in the file structure, right-click the <Mamut> folder and select **Properties** in the menu.
3. From the **Sharing** tab, click **Advanced Sharing** and select **Share this folder**.

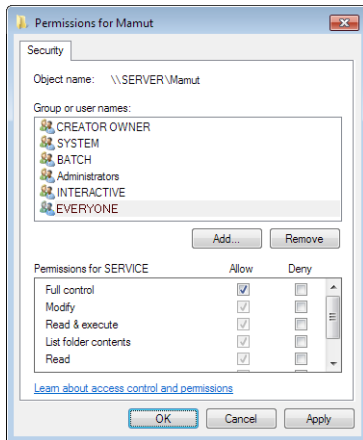


4. Click **Permissions** and give the group and/or users complete access.





5. Click **OK** in both windows.
6. From the **Security** tab, click **Edit** and select the group and/or users (for example be called **Everyone**) that will have access. Activate **Allow** for all levels.



7. Click on **Apply** and **OK**.  
If you get any **Access denied** messages, click **Continue**.
8. Click **OK**.

☒ The database on the server is now shared so that all remaining users can log themselves in.

>> In the above examples the <Mamut> folder is shared. During the first time startup of the program, in a multi-user installation, this area must be stated as the document directory for the network path (UNC). The path will then look like this: \\SERVERNAME\Mamut. If the <Data> folder is shared, the file path will be as follows: \\SERVERNAME\Data.

## Firewall on the Server

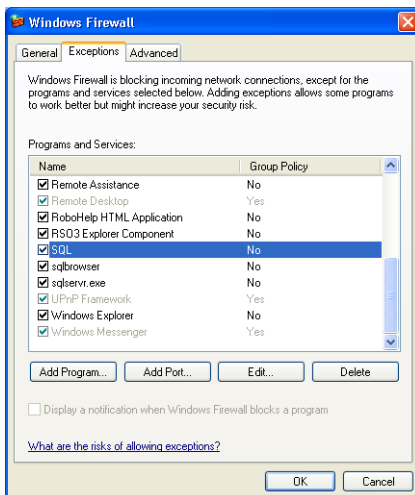
When you select server installation, the system will automatically open a path for the SQL Server in Windows Firewall, if it is used. You can find the settings for this in the Windows control panel, under Windows Firewall. If you use other program software with Firewall, you must enter exceptions within the Firewall. How to enter exceptions in your firewall depends on which software you are running. The same exceptions must be entered regardless of what kind of firewall software you are using. Please refer to the documentation for your firewall for further instructions.

### Windows Firewall

Below you will find the configurations for Windows Firewall, these are set automatically during the installation. You can check the settings and change them if necessary. Read more about changing the Windows Firewall settings on Microsoft's website. Please note that for **SQL**, you need to add a **Port** and for **sqlbrowser** and for **sqlservr.exe** you need to add a **Program**.

How to check the Windows Firewall settings in Windows Vista and older:

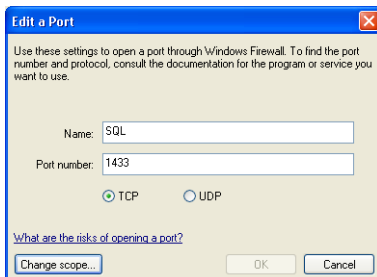
1. Open the settings for Windows Firewall via the **Control Panel**.
2. Click the **Exceptions** tab.



3. Select **SQL** and click **Edit**.

Check the following settings:

**SQL:** Port 1433/TCP.

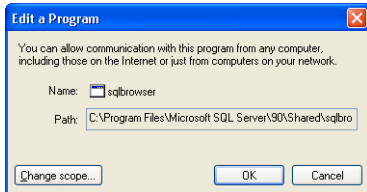


4. Click **OK**.

5. Select **sqlbrowser** and click **Edit**.

Check the following settings:

**sqlbrowser:** C:\Program Files\Microsoft SQL Server\90\Shared\sqlbrowser.exe

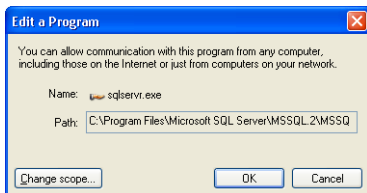


6. Click **OK**.
7. Select **sqlservr** and click **Edit**.


Check the following settings:

**sqlservr.exe:** C:\Program Files\Microsoft SQL Server\MSSQL.1\MSSQL\Binn\sqlservr.exe

Please note that the number after MSSQL can vary dependent on your installation.

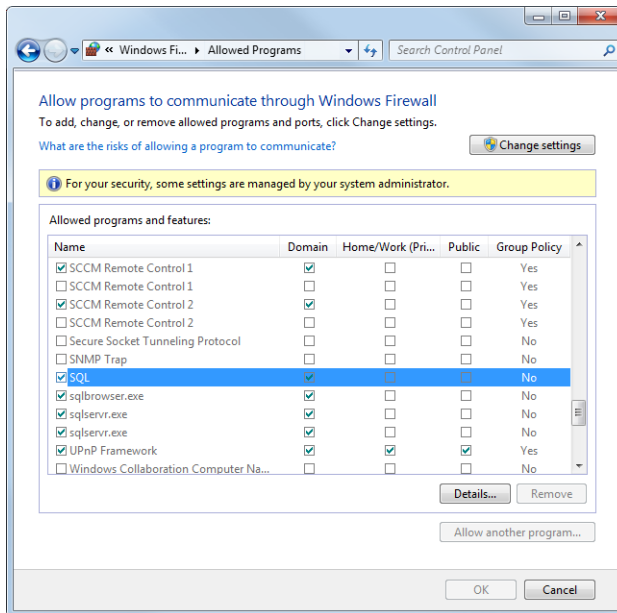


8. Click **OK**.
9. If all settings are correct, click **OK** and close the Control Panel.

 You have now checked and, if necessary, adjusted, the settings in the Windows Firewall.

### How to check the Windows Firewall settings in Windows 7:

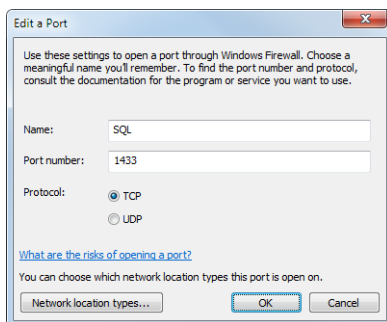
1. Open the settings for Windows Firewall via the **Control Panel**.
2. From the menu on the left, select **Allow a program or feature through Windows Firewall**.



3. Select **SQL** and click **Details**.

Check the following settings:

**SQL:** Port number 1433/TCP.

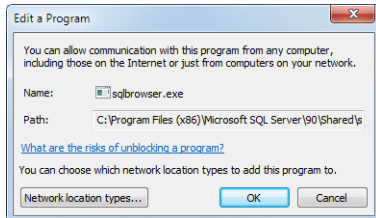


4. Click **OK**.

5. Select **sqlbrowser.exe** and click **Details**.

Check the following settings:

**sqlbrowser.exe:** C:\Program Files (x86)\Microsoft SQL Server\90\Shared\sqlbrowser.exe

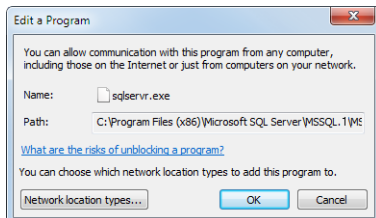


6. Click **OK**.
7. Select **sqlservr.exe** and click **Details**.


Check the following settings:

**sqlservr.exe:** C:\Program Files (x86)\Microsoft SQL Server\MSSQL.1\MSSQL\Binn\sqlservr.exe

Please note that the number after MSSQL can vary dependent on your installation.



8. Click **OK**.
9. If all settings are correct, click **OK** and close the Control Panel.

 You have now checked and, if necessary, adjusted, the settings in the Windows Firewall.

# Evaluate, move and update Mamut Business Software

## Evaluating and testing the program

If you would like to evaluate the program or one of the various add-on and extended products you do not have a licence for, you can easily do so. The majority of functions are available for evaluation and we recommend that you use the Example database for all evaluations. It contains ready-made contacts, products, prices, warehouses, a webshop and much more so that you can easily try out different functions without it affecting your own data and without the need for entering any information in order to get started. There are two ways to start evaluating and testing.

### Install the evaluation version

If you have not yet received your licence number, you can select to install the evaluation version during the first time startup. The evaluation is applicable for a set number of days and logins.

### Using the example database

If you have already installed the program, and registered the licence, you can install the example database via **File - Database utilities - Install example database**. After installing the example database, you open it via **File - Open company database**. There are no limitations to the number of days or logins.

The example database allows you to test the program without affecting your company data. When you log in to the example database you will be able to select the evaluation product and any available additional product for it.

## Updating to a new version

The software provider will notify you when a new version of the program has been released. You can update to a new version via the program's interface or by downloading the update from our website. It is important that you read the update documentation before you start. You will also need to create a backup first.

When an update is available you will find information about the update and the update wizard on the Internet: [www.mamut.co.uk/update](http://www.mamut.co.uk/update).

### Move Mamut Business Software and the database to another computer/server

It is possible to move the program and the database, for example from an old to a new computer or server. Note that the only way to move the database is by using a backup. It is not possible to move the program files for Mamut Business Software; you need to install the program on the new computer. The procedure is dependent on the type of installation. After the installation, you will have the possibility to restore the backup in the wizard for first-time startup. If you are installing a version that is newer than your current one, the database will be automatically updated. We recommend that you use the latest version at all times.

In help (F1), you can find more information about how to move the program to another computer/server.

# Where to find more information

This guide is intended to help you get started with the functionality within Mamut One. If you would like more information regarding the functionality or on how to take advantage of your products and services, you will find more information below:

## Additional documentation

Mamut also produces additional documentation that is continuously being updated in accordance with new and improved functionality within the program. Here you will find the **Mamut Knowledge Series**, among others, which consist of guides covering selected topics. This documentation series goes more in-depth, and provides more examples of procedures that demonstrate how to do things within the system. The documentation can be downloaded from our website: [www.mamut.com/uk/download](http://www.mamut.com/uk/download).

## Online help

All products and services from Mamut include comprehensive help, which can be opened by clicking Help within the relevant applications. In Mamut Business Software you can also, at anytime, press the function key **[F1]** to open a detailed help screen for the current window you are working in.

## Online tutorials

Mamut also offers you the possibility to watch tutorials on our homepage. Mamut's online tutorials provide you and your colleague's access to short videos covering Frequently Asked Questions (FAQs) free of charge. These videos include short and easy-to-follow instructions demonstrating different processes within the system. You can access a list of available online tutorials at [www.mamut.co.uk/tutorials](http://www.mamut.co.uk/tutorials).

## Article search

On [www.mamut.co.uk/support](http://www.mamut.co.uk/support), you also have access to our Article search, where you can find specific tips and tricks that can help you with problems you may have encountered within the program. Here you will also find links to the 10 newest and 10 most read support articles.



## Mamut Support Centre

The Mamut Support Centre offers an extensive personal service programme to assist you whenever you may need help. We recommend that you take advantage of the various sources described on the previous page of this guide before you contact us.

### How to get in touch with the Mamut Support Centre?

#### Get in touch via the program

Via the focus area **Mamut Support Centre** in the program, you are able to search for answers and send new queries. The status of and answers to your query can be found in the same place. In order to utilise this feature within the program, you must be connected to the Internet.

#### Get in touch over the phone: 02071530900

The phone lines are open between 9.00 am – 5.00 pm weekdays. The majority of questions will be answered in the course of the conversation, but for special cases we may note your question and contact you once a solution has been found.

#### Get in touch by e-mail

If you cannot find the answer you are looking for, you can send an e-mail to [support@mamut.co.uk](mailto:support@mamut.co.uk).

#### Get in touch via myMamut

You can also get in touch via myMamut. Here you can create new queries, along with find the status and response to your previous queries, all in one place.

Mamut Alliance Partners



Founded in 1994, Mamut (OSE "MAMUT") is a leading European provider of complete, integrated software solutions and internet services for SME's. Mamut offers complete and user-friendly solutions at the best value for money, integrating CRM, sales force, logistics, accounting, e-Commerce, domains, email, web hosting and security. More than 400,000 European customers simplify their daily business with solutions from Mamut. Further information about Mamut and the company's products can be found at [www.mamut.co.uk](http://www.mamut.co.uk)

Copyright Mamut. All rights reserved. Right reserved to change the product, terms, conditions and service option without notice. Mamut and the Mamut logo are registered trademarks for Mamut. All other trademarks are registered trademarks of their respective companies.

A company in

